

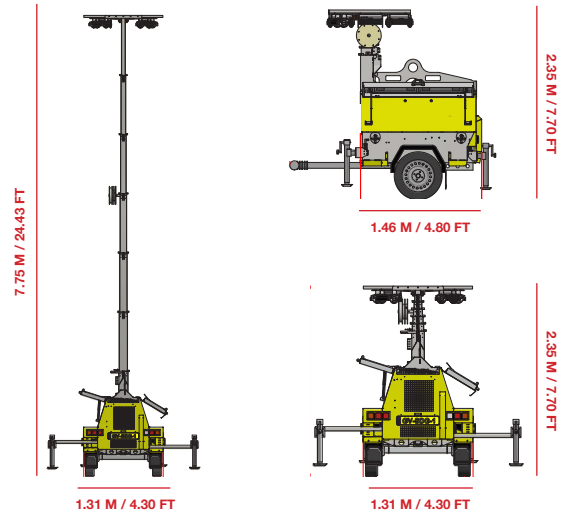
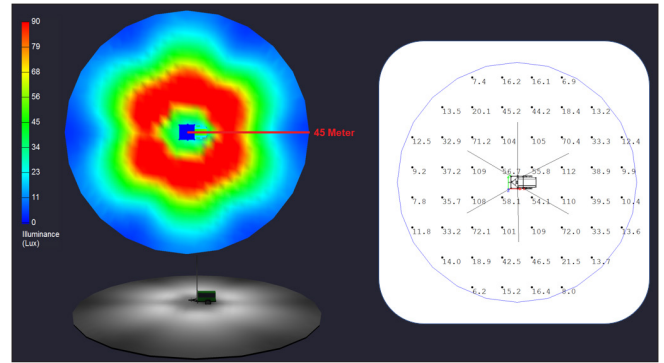
# VERDEGRO®

## TABLE OF CONTENTS AND DIMENSIONS ILLUMINATED AREA

### BENEFITS OF THE LLTT-H

- Hybrid technology : combined Solar Energy with DC generator makes it very environmental friendly in use. Great for 24/7 operations like Mining, Oil & Gas, Rental and Construction operations.
- 6-8 hours runtime of the LED floodlights on the battery-bank only.
- Max. 3-4 hours engine runtime per 10 hour night.
- Almost no CO2 emission and Noise Emission because of runtime on the battery-bank.
- Ideal for use in residential areas because of low sound emission.
- 24Vdc powered system and battery-bank safe to use (low voltage no explosion risks)
- Lower operational costs by saving up to 28 litre of diesel per night with the LLTT Hybrid.
- Reduce engine maintenance to max. 4 times per year because of the low runtime of the engine. Instead of very month with a conventional light tower.(250-400 hour runtime)
- Reduce labour costs and spillage by refuelling only once every 30-45 days instead of every 2-3 days with a conventional light towers.
- Optional DSE interface for remote operation of the LLTT Hybrid, Engine and fuel level monitoring , remote switching of the lights and Geofencing with GPS position.

**THIS IS WHY  
YOU WANT THE  
ENVIRONMENTAL  
FRIENDLY LIGHT  
TOWER.**



### LLTT-H



### DIMENSIONS & WEIGHT

- Dimension min:** 1922mm x 1331mm x 2299mm
- Dimension max:** 1922mm x 2520mm x 7799mm
- total weight ex fuel:** 985kg / 2171lbs

### FEATURES

- Lights:** 4 lights up to 6 lights
- Total lumen:** 4 lights 68000lm  
6 lights 102000lm
- Lifting system** Electric winch
- battery bank** 300AH 24Vdc AGM

### ENGINE

- Model:** Kubota Z482 Tier4
- Fuel:** Diesel
- Tank capacity (L):** 140L / 37 gallon (US)
- Consumption (L/H):** 0.4L/H 0.1gal/H
- Noise Level (dBa) at 7M:** 65db
- Runtime:** 35/40 days depending on light output

### FLOODLIGHTS

- 100 watt VisionX effective 17000lm per light
- 150watt Verdegro 14790lm per light

### OPTIONS

- DSE Interface 3G + GPS Module
- Battery Isolator switch + lockable cover mounted on outside
- Starter Isolator switch + lockable cover mounted on outside
- Emergency stop switch mounted on outside LLTT-H
- Overspeed air-intake valve + spark-arrestor ( oil & gas, mining specs)
- Winter package (Cooled diesel heater system)
- TÜV Homologation (European trailers only)
- Upgrade 9 meter

## KEY BENEFITS

- ✓ LOW FUEL CONSUMPTION
- ✓ LOW CO2 EMISSION
- ✓ LOW NOISE EMISSION
- ✓ REDUCED ENGINE MAINTENANCE
- ✓ 80% LOWER OPERATIONAL COSTS.
- ✓ VERY EASY TO USE

# VERDEGRO®

SALES@VERDEGRO.COM  
WWW.VERDEGRO.COM



Verdegro USA LLC |

1700 W. Irving park RD suite 303  
Chicago, IL 60613, USA |  
sales@verdegro.com

+1 (786)-408-5709 | +1 (786)-431-3097



Verdegro Group |

Munnikenheiweg 59 | 4879 NE  
Etten Leur The Netherlands | +31 (0)76 - 50 17 990  
info@verdegro.com | www.verdegro.com

# SOLAR HYBRID LIGHT TOWER TRAILER



THE **MOST EFFICIENT HYBRID**  
ON THE MARKET

[WWW.VERDEGRO.COM](http://WWW.VERDEGRO.COM)



Solar powered / Hybrid



Environmentally friendly / low CO2 emission



Low noise emission



Battery powered / Hybrid technology



Low fuel consumption (0.4L/H)

## APPLICATIONS



Rental



Special events



Rural & hard to reach areas



Emergency response



Construction & work sites



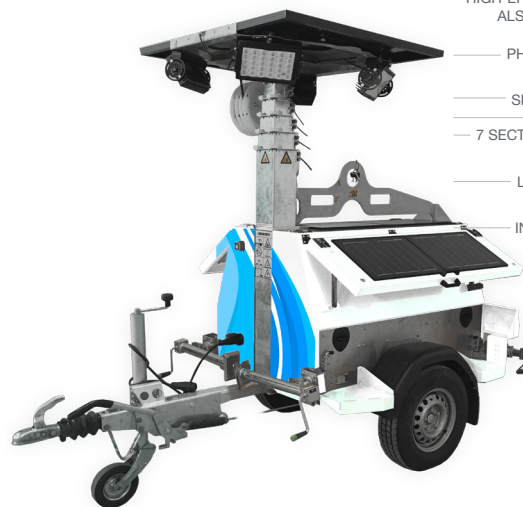
Gas, oil & mining operations (Explosion safe)



Military applications

## SOLAR HYBRID LED LIGHT TOWER TRAILER

### SPECIFICATION LLTT-H



SOLAR POWER SYSTEM (350W)

HIGH-EFFICIENCY LED FLOOD LIGHTS  
ALSO EXPLOSION PROOF LIGHTS  
AVAILABLE

PHOTOCELL DAYLIGHT SENSOR  
(AUTOMATIC ON/OFF)

SPRING - DRIVEN CABLE DRUM  
OPTIONAL GEO FENCING  
7 SECTION VERTICAL TOWER (STEEL  
GALVANISED)

LIGHTS COVERAGE AVAILABLE  
3200M2 LIGHT

INFORMATION LED BACKLIGHT  
CONTROLLER SCREEN

SOLAR POWER  
SYSTEM (350W)

HYBRID DIESEL  
GENERATOR 24 VDC  
OPERATING SYSTEM

BUNED FUEL TANK  
CAPACITY 140L

4 OUTRIGGERS WITH  
STABILIZING JACKS

AVERAGE FUEL CONSUMPTION 4L A DAY  
40 NIGHTS BEFORE REFUELING!  
\* ASK FOR FULL SPECIFICATIONS

USES DAY LIGHT ENERGY  
TO ILLUMINATE THE NIGHT.